

# 2-Way Normally Closed 1/8" NPT Valves

Brass and Stainless Steel



## General Description

Parker offers 2-Way, Normally Closed Miniature Direct Acting Valves. They are available with 303 Stainless Steel bodies with FKM or EPDM seals or Brass bodies with NBR seals. Valves with Stainless Steel bodies and EPDM seals are NSF 169 certified.

## Standard Materials of Construction

- **Body:** Brass or Stainless Steel (303)
- **Seals:** NBR, FKM, EPDM
- **Sleeve Assembly:** 305 Stainless Steel and 430F Stainless Steel
- **Plunger:** 430F Stainless Steel
- **Flux Plate:** Plated Steel
- **Housing:** Plated Steel
- **Integrated Coil Encapsulant:** Nylon
- **Spring:** 18-8 Stainless Steel

## Applications

- Instrumentation Equipment
- Analyzers and Diagnostic Equipment
- Medical and Dental Equipment
- Spraying Equipment
- Lubrication Equipment
- Beverage Dispensing
- Oil Burners
- Humidification and Misting Equipment
- Mobile Fuel Shut off
- Textile and Dry Cleaning Equipment
- Floor Cleaners
- Welding Equipment

## Compatible Fluids

Lubricated Air, Inert gases, Water, Light Oil (300 SSU maximum) and additional fluids compatible with materials of construction.

## Installation

Valves can be mounted in any position. The preferred orientation is vertical and upright.

*Use of non-lubricated gaseous media will substantially limit valve life.*

## How to Order

1. Select Pressure Vessel.
2. Select Voltage, Coil and Housing desired from coil chart.
3. Add together, order complete part number.

Note: 3000 Series Valves are not sold modularly.

Example: 3121BSN1GV00 + RRT1J1P3 = 3121BSN1GV00RRT1J1P3

## Mechanical Characteristics

Mounting	Two 8-32 tapped holes in bottom of valve body. A universal mounting bracket (B19.001MSP) is available.
Coil Classifications	Class B Molded Tab coil Class B Taped Leaded Coil <i>AC Coils have a full wave bridge rectifier</i>
Agency Approvals	UL and CSA Component Recognition
Weight	6 oz.
Cycle Rate	Up to 600 cycles per minute

# 2-Way Normally Closed 1/8" NPT Valves

Brass and Stainless Steel

## Product Specifications

2-Way Normally Closed - Brass body and NBR seals

Port Size NPT (in)	Orifice Size (in)	Flow Factor Cv	Operating Pressure Differential (MOPD) psi		AC/DC Watts*	Max. Media Temp °F	Seal	Pressure Vessel Number
			Min	Air, Inert Gas, Water & Light Oil (300 SSU)				
1/8	3/64"	0.05	0	500	6	100°F	NBR	3121BBN1EN00
1/8	1/16"	0.09	0	300	6	100°F	NBR	3121BBN1GN00
1/8	5/64"	0.13	0	200	6	100°F	NBR	3121BBN1JN00
1/8	3/32"	0.18	0	175	6	100°F	NBR	3121BBN1LN00
1/8	1/8"	0.24	0	100	6	100°F	NBR	3121BBN1NN00

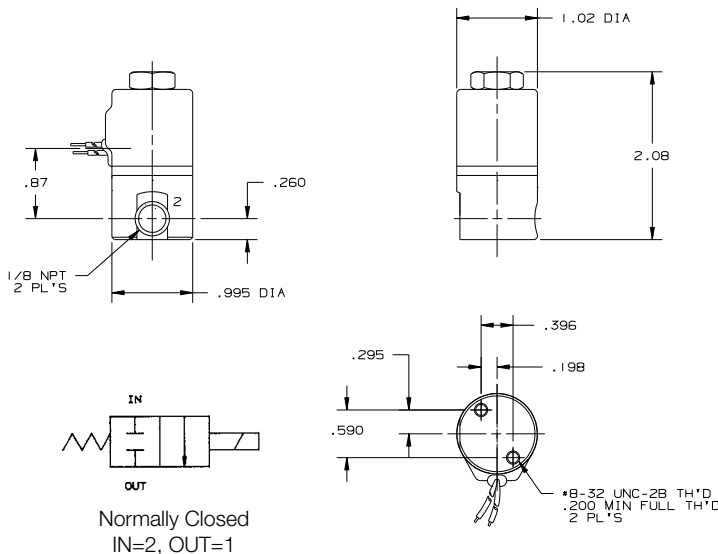
2-Way Normally Closed - 303 Stainless Steel body and FKM seals

Port Size NPT (in)	Orifice Size (in)	Flow Factor Cv	Operating Pressure Differential (MOPD) psi		AC/DC Watts*	Max. Media Temp °F	Seal	Pressure Vessel Number
			Min	Air, Inert Gas, Water & Light Oil (300 SSU)				
1/8	3/64"	0.05	0	500	6	100°F	FKM	3121BSN1EV00
1/8	1/16"	0.09	0	300	6	100°F	FKM	3121BSN1GV00
1/8	5/64"	0.13	0	200	6	100°F	FKM	3121BSN1JV00
1/8	3/32"	0.18	0	175	6	100°F	FKM	3121BSN1LV00
1/8	1/8"	0.24	0	100	6	100°F	FKM	3121BSN1NV00

2-Way Normally Closed - 303 Stainless Steel body and EPDM seals

Port Size NPT (in)	Orifice Size (in)	Flow Factor Cv	Operating Pressure Differential (MOPD) psi		AC/DC Watts*	Max. Media Temp °F	Seal	Pressure Vessel Number
			Min	Air, Inert Gas, Water & Light Oil (300 SSU)				
1/8	3/64"	0.05	0	500	6	100°F	EPDM	3121BSN1EE00
1/8	1/16"	0.09	0	300	6	100°F	EPDM	3121BSN1GE00
1/8	5/64"	0.13	0	200	6	100°F	EPDM	3121BSN1JE00
1/8	3/32"	0.18	0	175	6	100°F	EPDM	3121BSN1LE00
1/8	1/8"	0.24	0	100	6	100°F	EPDM	3121BSN1NE00

\* 24/50-60 Hz = 7.5 Watts



### Coil Chart

Integrated Coil 1/4" Tab Electrical Connection, Class B



Part Number	Voltage	Wattage
N0M1S1P0	24/50-60	7.5
N0M1S1P3	120/60, 110/50	6
N0M1S1Q3	240/60, 220/50	
N0M1S1C1	12VDC	
N0M1S1C2	24VDC	

Class B Taped Coil in Grommet Housing with 12" Leads



Part Number	Voltage	Wattage
RRT1J1P0	24/50-60	7.5
RRT1J1P3	120/60, 110/50	6
RRT1J1Q3	240/60, 220/50	
RRT1J1C1	12VDC	
RRT1J1C2	24VDC	

