

Banjo Valve

For air actuation of process and Industrial control valves



Customer Value Proposition:

Parker Fluid Control Division's 3-way normally closed Banjo valve offers an ideal and cost effective complement to our existing range of high quality valves for process application control.

The valve is offered standard with a DIN plug and cable gland connector for a cost-effective installation. But, to meet your requirements, the valve is also available in a modular design or fully assembled with other coil styles available. The valve is typically used for piston and diaphragm actuators.

The new valve screws directly into the actuator of Parker's family of angle seat valves without the need for supplemental pilot valve fittings for ease of installation.

In addition, the locking manual override allows manual operation during set-up and system control in case of power failure. With a life expectancy up to 5 million cycles, you can expect long life and dependable service.



Product Features:

- Direct mounting to angle seat valve actuator with banjo bolt
- Standard locking manual override
- Din coil freely rotatable
- Life expectancy up to 5 million
- Modular pressure vessel design
- AC and DC voltage compatible



ENGINEERING YOUR SUCCESS.

Technical Specifications

Mechanical Characteristics

Valve Type

3/2 normally closed solenoid valve

Materials

Anodized aluminum body,
Stainless steel internals,
FKM sealing material

Coil Enclosures

DIN, NEMA 4 with cable gland
connector

Coil Wattage

4.5 to 5.0 watt depending
on voltage

Porting

1/8" NPT or G 1/8" pressure port.
(reference valve number) Banjo
bolt G 1/8" or G 1/4" male thread

Mounting

Any position

Operating Characteristics

ΔP minimum 0 psid
 ΔP maximum 150psi

Environmental Temp. Ranges:

Fluid Temperature Range:

*0°F (-18°C) to 185°F (85°C)

Ambient Temperature Range

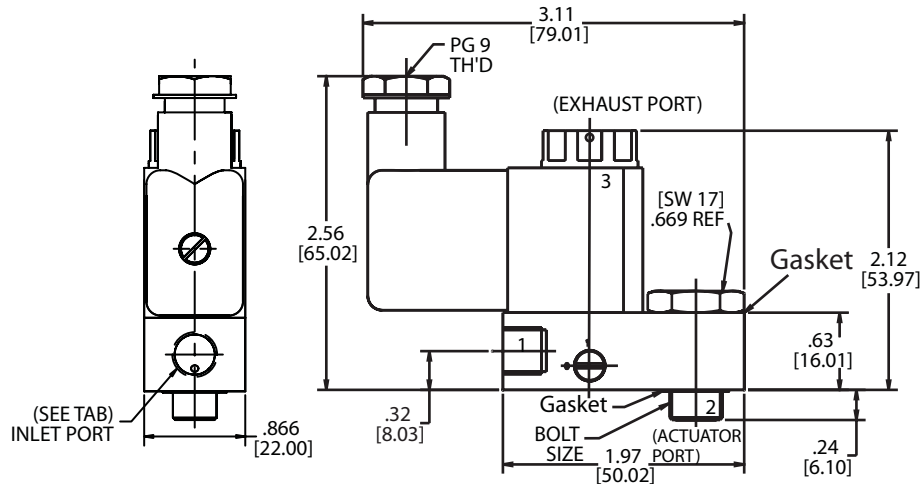
14°F (-10°C) to 122°F (50°C)

Compatible Fluids

Dry or lubricated air

Agency Approvals/Compliance

Din Coils: UL, CSA



Dimensions shown are in inches and millimeters.

Ordering Information

Part Number	Actuator Enclosure Port 2	Valve Pressure Port 1
U131B01NDAx	G 1/8"	1/8" npt
U131B02NDAx	G 1/4"	1/8" npt
131B03NDAx	G 1/8"	G 1/8"
131B04NDAx	G 1/4"	G 1/8"

Voltage Code for Din Coil

A= 12VDC B= 24VDC E= 24/60 F= 120/60, 110/50 G= 240/60, 220/50

Replace "x" in the Part number with one of the above Voltage Din Coil Codes.

* Consult your local Territory Manager when ordering valve and additional coil configurations or coil separately.

