

# Lead Free Water Valves

## Water, Hot Water, and Steam Solenoid Valves



### Product Features:

Parker's Fluid Control Division (FCD) has a long history in manufacturing industry leading steam and hot water valves. FCD has expanded this offering to include Lead Free Brass (containing less than 0.25% lead), meeting the SDWA, Section 1417(d) requirements for brass.

Our valves are specifically designed to withstand harsh application conditions. The steam valves have an integral stainless steel orifice for long life and durability.

### Typical Applications:

- Industrial Dish Washing
- Industrial Laundry
- Commercial Cooking
- Steam Tables
- Sterilizers / Autoclaves
- Dry Cleaning
- Steam Presses



### Product Specifications

#### Mechanical

**Valve Type:**

2-Way Normally Closed  
2-Way Normally Open

**Media:**

Water, Hot Water, Steam

**Porting:**

3/8" NPT to 1" NPT

**Wetted Materials:****Body/Cover:**

Lead Free Brass (<0.25%)

**Operator:**

300 & 400 Series SS, Copper

**Seals:**

PTFE & EPDM

#### Electrical

**Voltage:**

AC: 24/60, 120/60-110/50,  
240/60-220/50

DC: 12 & 24

**Connections:**

1/2" Conduit with leads,  
DIN 43650 Form A

**Temperature Class:**

Water & Hot Water – Class F  
Steam – Class H

**Agency Approvals:**

UL/CSA

#### Performance

**Maximum Media Temp:**

Water: Up to 180°F  
Steam: Up to 353°F

**Max Operating Pressure Differential:**

Up to 275 psi

**Orifice sizes:**

1/2" to 1"

**Flow Factor (Cv):**

Up to 12.2



ENGINEERING YOUR SUCCESS.

# Lead Free Water Valves

# Water, Hot Water, and Steam Solenoid Valves

## Water & Hot Water

### 2-Way - Normally Closed - Lead Free Brass

Port Size NPT	Orifice (in)	Flow Factor (Cv)	Operating Pressure Differential MOPD (psi)		Max. Media Temp (°F)	Seal	Power (Watts)	Part Number Pressure Vessel and Complete Valve	
			(Min.)	(Water)					
3/8	1/2	3.0	1	235	180	EPDM	11	06F25CL332ACF	A C
1/2	1/2	3.6	1	235	180	EPDM	11	08F25CL332ACF	
3/4	3/4	7.4	1	235	180	EPDM	11	12F25CL348ACF	
1	1	12.2	1	300	180	EPDM	11	16F25CL364ACF	
1/2	1/2	3.6	1	235	180	EPDM	11	08F25CL332ACF4C05*	
3/4	3/4	7.4	1	235	180	EPDM	11	12F25CL348ACF4C05*	
1	1	12.2	1	300	180	EPDM	11	16F25CL364ACF4C05*	
3/8	1/2	3.0	1	130	150	EPDM	11.5	06F25CL332A3F	D C
1/2	1/2	3.6	1	130	180	EPDM	11.5	08F25CL332A3F	
3/4	3/4	7.4	1	70	150	EPDM	11.5	12F25CL348A3F	
1	1	12.2	1	275	180	EPDM	11.5	16F25CL364A3F	

### 2-Way - Normally Open - Lead Free Brass

Port Size NPT	Orifice (in)	Flow Factor (Cv)	Operating Pressure Differential MOPD (psi)		Max. Media Temp (°F)	Seal	Power (Watts)	Pressure Vessel Part Number	
			(Min.)	(Water)					
3/8	1/2	3.0	1	175	180	EPDM	11	06F25OL332ACF	A C
1/2	1/2	3.6	1	175	180	EPDM	11	08F25OL332ACF	
3/4	3/4	7.4	1	275	180	EPDM	11	12F25OL348ACF	
1	1	12.2	1	250	180	EPDM	11	16F25OL364ACF	
3/8	1/2	3.0	1	175	180	EPDM	11.5	06F25OL332A3F	D C
1/2	1/2	3.6	1	175	180	EPDM	11.5	08F25OL332A3F	
3/4	3/4	7.4	1	200	150	EPDM	11.5	12F25OL348A3F	
1	1	12.2	1	125	180	EPDM	11.5	16F25OL364A3F	

## Steam

### 2-Way - Normally Closed - Lead Free Brass



Port Size NPT	Orifice (in)	Flow Factor (Cv)	Operating Pressure Differential MOPD (psi)		Max. Media Temp (°F)	Seal	Power (Watts)	Part Number Pressure Vessel and Complete Valve	
			(Min.)	(Steam)					
3/8	1/2	3.0	1	125	353	PTFE	11	06FS5CL432ACH	A C
1/2	1/2	3.6	1	125	353	PTFE	11	08FS5CL432ACH	
3/4	3/4	7.4	1	125	353	PTFE	11	12FS5CL448ACH	
1	1	12.2	1	125	353	PTFE	11	16FS5CL464ACH	
1/2	1/2	3.6	1	125	353	PTFE	11	08FS5CL432ACH4C05*	
3/4	3/4	7.4	1	125	353	PTFE	11	12FS5CL448ACH4C05*	
1	1	12.2	1	125	353	PTFE	11	16FS5CL464ACH4C05*	

\* Complete valve ships with pressure vessel and coil.





Lead Free Water Valves

## Coil Options - Water &amp; Hot Water

	Part #	Voltage	Type of Termination	Wattage	Class
	CF4C01	24/60	1/2" NPT Conduit / 18" Leads	11	F
	CF4C05	120/60, 110/50			
	CF4C15	240/60, 220/50			
	3F4C75	12 VDC	1/2" NPT Conduit / 18" Leads	11.5	F
	3F4C80	24 VDC			
	CFPH01	24/60	DIN 43650A / ISO 4400	11	F
	CFPH05	120/60, 110/50			
	CFPH15	240/60, 220/50			
	3FPH75	12 VDC	DIN 43650A / ISO 4400	11.5	F
	3FPH80	24 VDC			

## Coil Options - Steam

	Part #	Voltage	Type of Termination	Wattage	Class
	CH4C01	24/60	1/2" NPT Conduit / 18" Leads	11	H
	CH4C05	120/60, 110/50			
	CH4C15	240/60, 220/50			
	CHPH01	24/60	DIN 43650A / ISO 4400	11	H
	CHPH05	120/60, 110/50			
	CHPH15	240/60, 220/50			

## How to Order

## Order Modularly

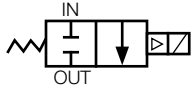
1. Select and order the Pressure Vessel part number and the matching Coil part number

## Order Fully Assembled

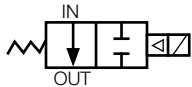
1. Select Pressure Vessel
2. Select matching Coil
3. Add together Pressure Vessel and Coil (noting the last two digits of the Pressure Vessel and the first two digits of the coil are the same)

Example: 12F25CL348ACF + CF4C05 = 12F25CL348ACF4C05

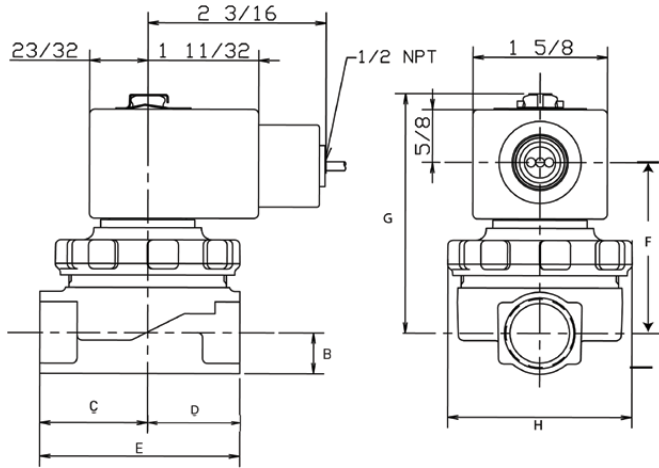
## Dimensions



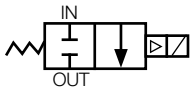
2-Way Normally Closed  
06F25C, 08F25C, 12F25C



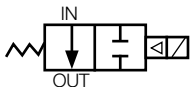
2-Way Normally Open  
06F25O, 08F25O, 12F25O



Valve	NPT	B	C	D	E	G	H
06F25CL 06F25OL 06FS5CL	3/8	1/2	15/16	1 1/8	2 7/16	2 7/8	2 1/4
08F25CL 08F25OL 08FS5CL	1/2	1/2	15/16	1 1/8	2 7/16	2 7/8	2 1/4
12F25CL 12F25OL 12FS5CL	3/4	5/8	1 5/8	1 1/2	3 1/8	3 1/2	3 1/2



2-Way Normally Closed  
16F25C, 16FS5C



2-Way Normally Open  
16F25O

