

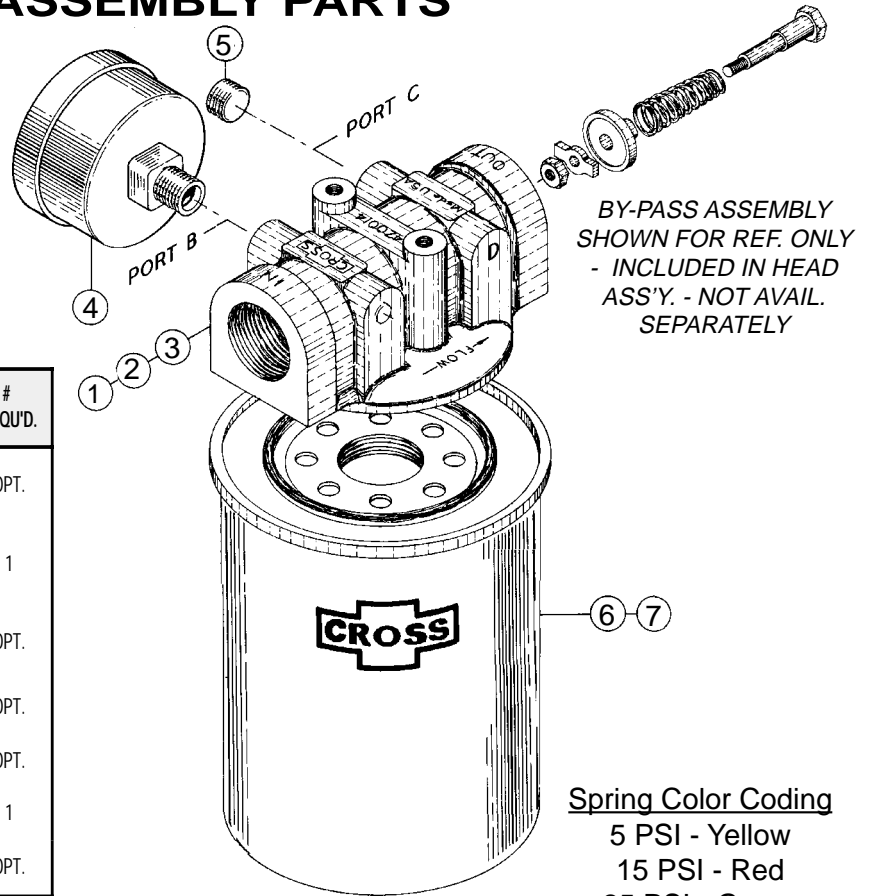


Manufacturing, Inc.
 Lewis, Kansas 67552
 Phone 620/324-5525
 Fax 620/324-5737

FILTER ASSEMBLY PARTS

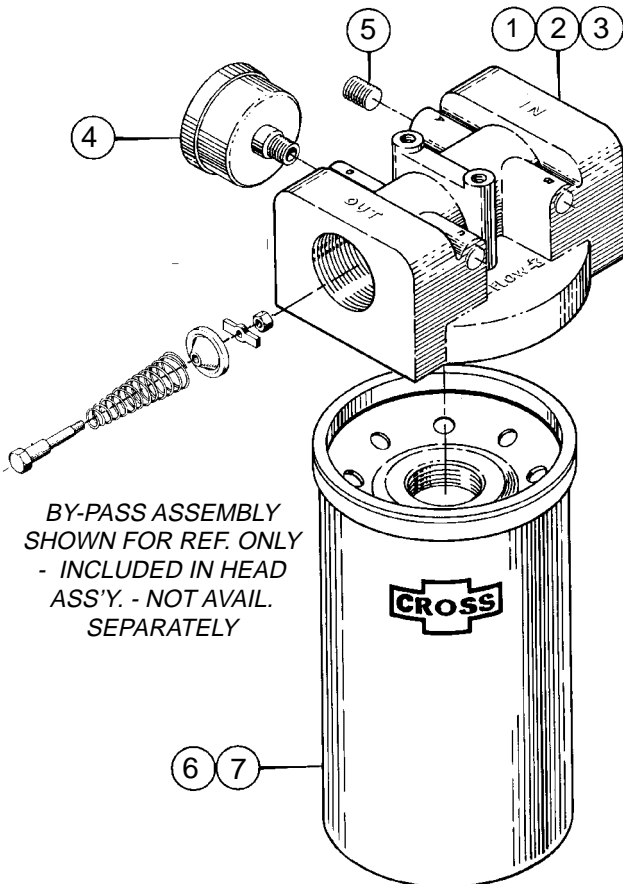
MODEL F1 PARTS

ITEM	PART #	DESCRIPTION	# REQU'D.
1	1F0005	ASSEMBLY, FILTER HEAD (3/4" NPTF - 5 PSI BYPASS)	OPT.
2	1F0015	ASSEMBLY, FILTER HEAD (3/4" NPTF - 15 PSI BYPASS)	1
3	1F0025	ASSEMBLY, FILTER HEAD (3/4" NPTF - 25 PSI BYPASS)	OPT.
4	1A1699	PRESSURE GAGE, 0-30 PSI	OPT.
5	2A0349-2	PIPE PLUG, 1/8" NPTF	OPT.
6	1A9021	FILTER REPLACEMENT CART. (10 MICRON)	1
7	1A9023	FILTER REPLACEMENT CART. (25 MICRON)	OPT.
REF.	1A9272	REPLACEMENT FILTER GASKET	



MODEL F2 PARTS

ITEM	PART #	DESCRIPTION	# REQU'D.
1	2F0005	ASSEMBLY, FILTER HEAD (1 1/4" NPTF - 5 PSI BYPASS)	OPT.
2	2F0015	ASSEMBLY, FILTER HEAD (1 1/4" NPTF - 15 PSI BYPASS)	1
3	2F0025	ASSEMBLY, FILTER HEAD (1 1/4" NPTF - 25 PSI BYPASS)	OPT.
4	1A1699	PRESSURE GAGE, 0-30 PSI	OPT.
5	2A0349-2	PIPE PLUG, 1/8" NPTF	OPT.
6	1A9251	FILTER REPLACEMENT CART. (10 MICRON)	1
7	1A9253	FILTER REPLACEMENT CART. (25 MICRON)	OPT.
REF.	1A9111	REPLACEMENT FILTER GASKET	



CROSS MANUFACTURING INC. reserves the right to discontinue products and/or to change design, specifications or prices at any time without incurring any obligation.

FILTER INSTALLATION INSTRUCTIONS

1. Tighten gage port plugs in head assembly. 1/8" NPTF threads should be torqued 5 to 7 foot pounds. Use liquid pipe sealant only - NO TEFLON TAPE.
2. *NOTE: Filter element has not been tightened at the factory.* Apply film of oil to seal and hand turn until element seal contacts filter head. After contact, tighten only 1/4 turn. Start system and check for leaks.
3. For best results, mount filter assembly in vertical position with filter cartridge DOWN. Allow one inch (for F1) or one and a half inch (for F2) clearance below filter for easy replacement of filter cartridge.
4. Connect filter assembly in line for oil to flow in direction of arrow on filter head.
5. Filter assembly installed as either "Return-Line" (located between control valve and reservoir) or "Suction-Line" (located between reservoir and pump inlet.) *5 psi head assembly is required for suction line applications.*

Springs are color coded to indicate by-pass pressures:
5 psi - yellow; 15 psi - red; 25 psi - blue

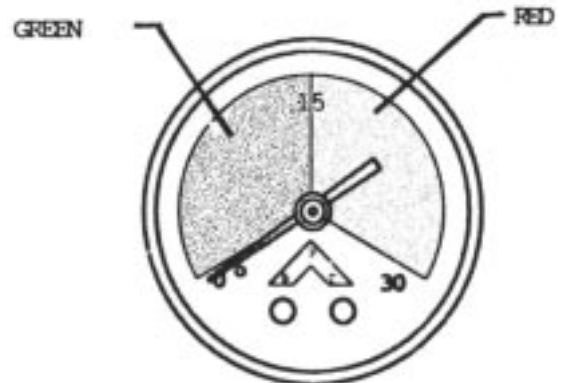


INSTALLATION for FILTER ASSEMBLY with CONDITION INDICATOR

1A1699 Filter Gage

1. The 1A1699 filter gage has a 0-30 psi range and fits the 1/8" NPTF gage ports on the CROSS filter heads. 0 to 15 psi is indicated by a green area on the gage. This is the **standard bypass spring range in a return line filter**. The red area from 15 to 30 psi indicates that the filter would be bypassing unfiltered oil. *(The gage is not recommended for suction line applications.)*

2. Indicator should register "0" with system not flowing.
Failure to register "0" may indicate indicator is damaged or defective.



System Maintenance: Oil must be filtered to a minimum of 25 microns. Filters should be changed regularly — spin-on types after 50 hours of initial use and then after every two hundred fifty hours of use. Use of a condition indicator is recommended.

Consult your tractor or implement owner's manual for filtration and changing recommendations for internal systems.