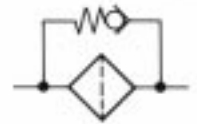




HYDRAULIC FILTERS

FOR USE WITH PETROLEUM BASE FLUIDS

IN-LINE TYPE
SERIES F1/F2
Specification Sheet



The CROSS series F1 and F2 in-line type hydraulic oil filters are high quality low cost units featuring spin-on, throw-away elements. The thru-type by-pass valve is available in 15 or 25 psi for return line installations and 5 psi for suction line applications. A specially engineered seal permits usage up to 200 psi.

GENERAL SPECIFICATIONS

Rated flow	F1: 20 gpm (78 l/m)	F2: 60 gpm (227 l/m)
Filtering area	F1: 10 micron	349 sq. in. (2252 cm ²)
	25 micron	490 sq. in. (3161 cm ²)
	F2: 10 micron	892 sq. in. (5755 cm ²)
	25 micron	1075 sq. in. (6935 cm ²)
Rated pressure	200 psi (14 bar)	
Temperature range	20° F (-29° C) to + 300° F (149° C)	
Mounting	In-line and 2 threaded bosses	
Weight	F1: 2 lbs. (.9 Kg)	F2: 6 lbs. (2.7 Kg)

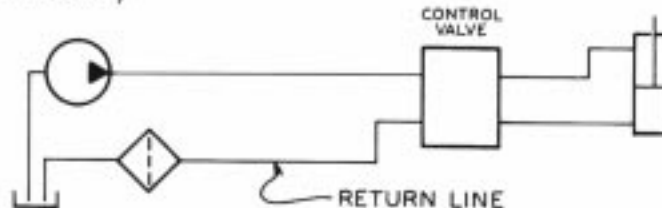
FEATURES

- Full flow filtration
- Spin-on, throw-away elements
- 10 or 25 micron filter elements
- Heads include 5, 15, or 25 psi by-pass spring assemblies
- Pipe ports

AVAILABLE OPTIONS

- Indicator (pressure) gauge

APPLICATIONS (TYPICAL)

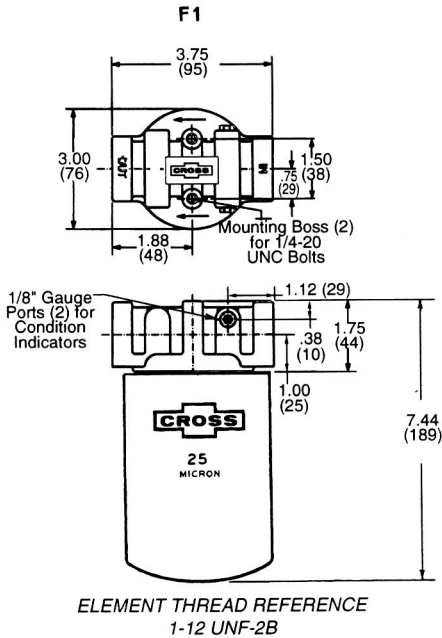


Hydraulic system preventive maintenance, with regular filter element changes, is essential to assure long life of components and to prevent personal injury resulting from equipment malfunction. Spin-on filters should be changed after 50 hours of initial use and then after every one hundred hours of use.

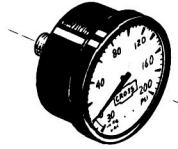
If the CROSS filter becomes clogged with contamination before changing, the internal by-pass valve opens at the pre-set pressure to prevent collapse of the element (return line). A filter must be sized to handle the maximum flow at its position in the system; i.e., a return line filter in a regenerative or accumulator system must be capable of handling the full flow being returned to the reservoir which is frequently in excess of the pump output capacity.



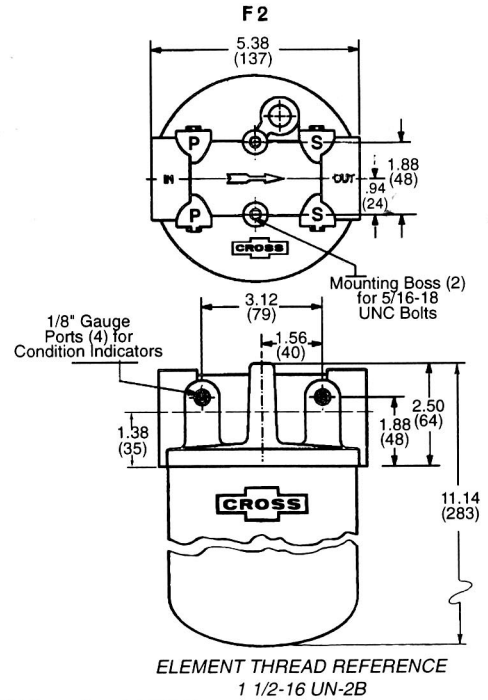
DIMENSIONAL DATA: in inches and (millimeters)



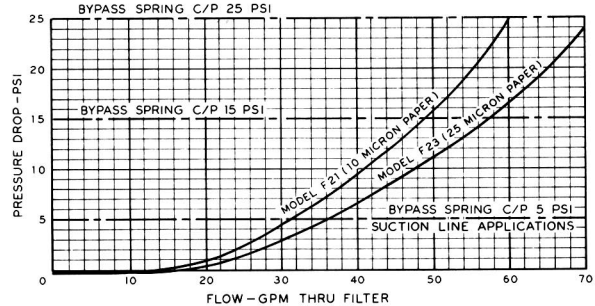
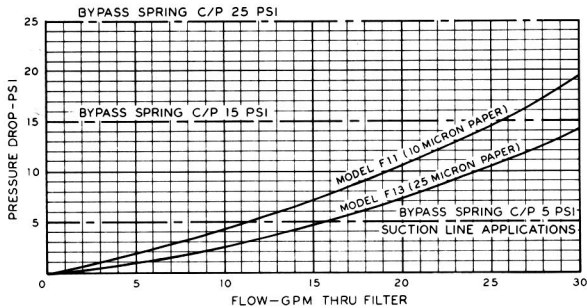
Part #1A1699



**PRESSURE GAUGE
1/8 NPT**



PERFORMANCE DATA: (Typical) Pressure Drop — 120 SUS Oil Viscosity at 120° F



ORDERING INFORMATION:

INDICATOR (1)	MODEL NUMBER	FILTRATION	BY-PASS PRESSURE	PORT SIZE and TYPE	
				F1	F2
G	F1 (20 gpm) F2 (60 gpm)	1 10 Micron 3 25 Micron	A. 5 psi B. 15 psi C. 25 psi	A. 3/4 NPTF	A. 1 1/4 NPTF

G
F1
1
B
A

EXAMPLE: GF11BA is a model F1 filter with an indicator, 10 micron element, 15 psi by-pass spring and 3/4" NPTF ports.

(1) Omit indicator prefix if indicator is not desired.

REPLACEMENT ELEMENTS:

	10 MICRON	25 MICRON
F1	1A9021	1A9023
F2	1A9251	1A9253



CROSS MANUFACTURING, INC.
100 Factory Street
Lewis, Kansas 67552
620/324-5525 Fax - 5737