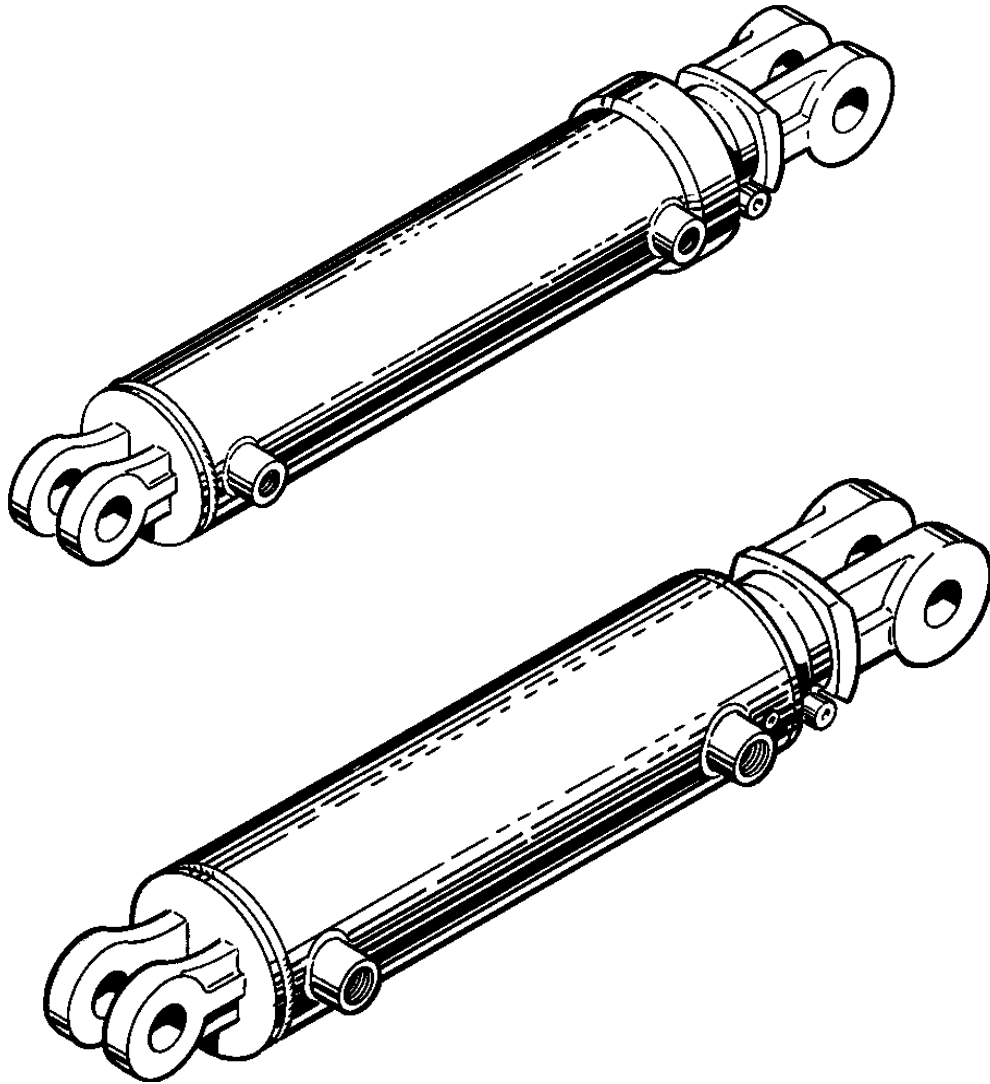


MODEL NU

Standard Welded Cylinders



FEBRUARY 15, 2001



MANUFACTURING, INC.

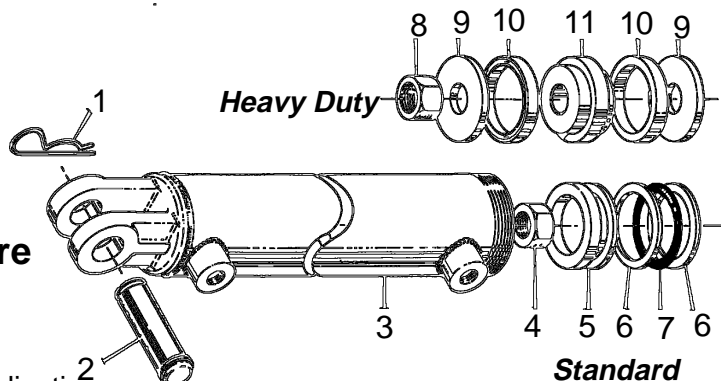
LEWIS, KANSAS

PHONE 620/324-5525

FAX 620/324-5737



NU STANDARD WELDED CYLINDERS 2 & 2 1/2" Bore



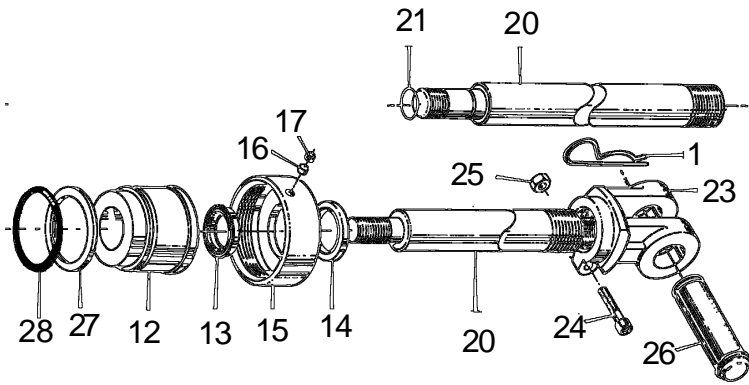
- 2500 psi working pressure (3000 for heavy duty)
- O-ring and back-up piston seals on standard model
- Polyurethane u-cup piston design for heavy duty application
- Double lipped u-cup in head I.D. for superior sealing
- Welded base with head assembly design which permits easy replacement of seals
- Hardened and chrome plated rods to resist damage and rust
- Clevis mounting, 1 inch pin holes on 2 thru 4 inch bores, 1 1/4 inch on 5 inch bore
- 3/8" NPTF ports on 2" bore, 1/2" NPTF ports on 2 1/2 thru 4 inch bore sizes,
- 3/4" NPTF on 5 inch bore
- Dimensional data: See FMCN02 - NW Specification Sheet.

2, 2 1/2" Bore	Stroke + 11 1/2" = Closed Center
3, 3 1/2" Bore	Stroke + 11 1/4" = Closed Center
4, 5" Bore	Stroke + 12" = Closed Center

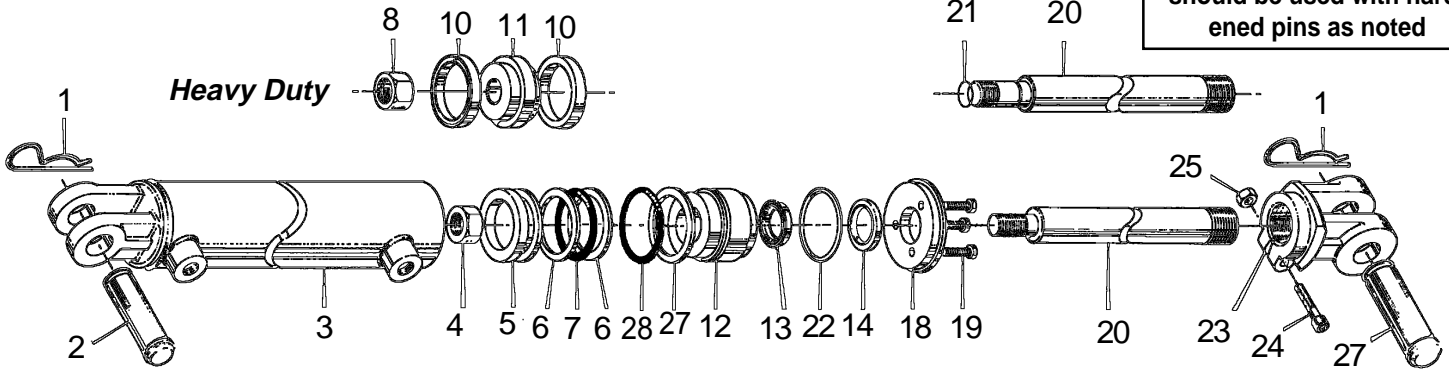
(All dimensions are same as NW except closed center dimensions.)

NU PARTS LIST

Item #	Description	Qty.	2" bore - 1 1/4"	2 1/2" bore - 1 1/4"	3" bore - 1 1/2"	3 1/2" bore - 1 3/4"	4" bore - 2"	5" bore - 2"
1	PIN CLIP	2	2A0308-1	2A0308-1	2A0308-1	2A0308-1		
2	CLEVIS PIN **HEAVY DUTY Model	1	1D1551-16238	1D1551-16238	1D1551-16238	1D1551-16238 **1D1582-16238		
3	TUBE ASS'Y.-see chart	1						
4	PISTON NUT	1	2A0246-12	2A0246-12	2A0246-12	2A0246-16		
5	PISTON	1	1D1401-200	1D1401-250	1D1401-300	1D1401-350		
6	BACK-UP - PISTON	2	2A0010-326	2A0010-330	2A0010-334	2A0010-338		
7	O-RING - PISTON	1	2A0283-7326	2A0283-7330	2A0283-7334	2A0283-7338		
8	HD PISTON : NUT	1	2A0246-14	2A0246-14	2A0246-14	1A1141		
9	FOLLOWER PLATE	2	1A0734	1A1557				
10	U-CUP	2	2A0697-432	2A0697-440	2A0697-748	2A0697-656		
11	PISTON	1	1C8720	1C8725	1C8730	1C8735		
12	HEAD	1	4C2638	4C3140	4C3067	4C3144		
13	INNER U-CUP	1	2A0688-220	2A0688-220	2A0688-224	2A0688-128		
14	WIPER	1	2A0773-720	2A0773-720	2A0773-824	2A0773-1028		
15	EXT. HEADCAP (2-2 .5 BC	1	3C8397	3C8398				
16	NYLON BALL	1	2A0017-106	2A0017-106				
17	SETSCREW	1	2A0506-404	2A0506-404				
18	INTERNAL HEAD CAP	1			3C9602	3C6096		
19	CAPSCREW	3			2A0077-410	2A0077-410		
20	ROD & H.D. ROD - see ch	1						
21	H.D. ROD O-RING	1	2A0283-7018	2A0283-7018	2A0283-7018	2A0283-7022		
22	RETAINING RING	1			2A0462-300	2A0462-350		
23	CLEVIS **HEAVY DUTY Model	1	1D1003-5	1D1003-5	1D1003-5	1D1013-5 **3C4549		
24	CAPSCREW	1	2A0079-616	2A0079-616	2A0079-616	2A0079-616		
25	NUT	1	2A0235-6	2A0235-6	2A0235-6	2A0235-6		
26	CLEVIS PIN **HEAVY DUTY Model	1	1D1551-16275	1D1551-16275	1D1551-16275	1D1551-16300 **1D1582-16300		
27	BACKUP - HEAD	1	2A0010-224	2A0010-228	2A0010-334	2A0010-338		
28	O-RING - HEAD	1	2A0283-7224	2A0283-7228	2A0283-7334	2A0283-7338		
	SEAL KIT - STD.	REF.	4C2646	1C4759	1C4766	3C7020		
	SEAL KIT - H.D.	REF.	4C2639	3C1939	3C6928	4C0168		



****Heavy Duty Models - 3 1/2 to 5" bores feature bushings in the rod clevis and should be used with hardened pins as noted**



**Standard 3" - 5" Bore
RODS AND TUBE ASSEMBLIES**

Standard Model

Heavy Duty Model

Standard Model

Heavy Duty Model

Model #	Rod	Tube Ass ¹	Rod	Tube Ass ¹	Model #	Rod	Tube Ass ¹	Rod	Tube Ass ¹
208	1D0306-1438	1C2404	1D0406-1438	4C2640	3512	1D0313-1825	1C4181	1D0415-1825	
210	1D0306-1638	1C2442	1D0406-1638	4C2641	3516	1D0313-2225	2C1553	1D0415-2225	
212	1D0306-1838	1C2272	1D0406-1838	4C2642	3520	1D0313-2625	1C1911	1D0415-2625	
216	1D0306-2238	1C7256	1D0406-2238	4C2643	3524	1D0313-3025	3C6726	1D0415-3025	
220	1D0306-2638	1C4158	1D0406-2638	4C2644	3530	1D0313-3625	3C7365	1D0415-3625	
224	1D0306-3038	1C3741	1D0406-3038	4C2645	3536	1D0313-4225	1C3611	1D0415-4225	
2508	1D0306-1438	3C8853	1D0406-1438	3C6422	408	1D0315-1488	2C2865	1D0426-1488	
2510	1D0306-1638	3C9514	1D0406-1638	3C6419	410	1D0315-1688	1C2201	1D0426-1688	
2512	1D0306-1838	3C9515	1D0406-1838	3C6377	412	1D0315-1888	3C7181	1D0426-1888	
2516	1D0306-2238	3C9516	1D0406-2238	3C6375	416	1D0315-2288	3C7183	1D0426-2288	
2520	1D0306-2638	3C9517	1D0406-2638	3C6380	418	1D0315-2488	1C9560	1D0426-2488	
2524	1D0306-3038	1C9971	1D0406-3038	3C6378	420	1D0315-2688	2C0124	1D0426-2688	
308	1D0309-1425	1C2448	1D0408-1425	4C1919	424	1D0315-3088	1C3085	1D0426-3088	
310	1D0309-1625	1C1960	1D0408-1625	4C1167	430	1D0315-3688	1C2146	1D0426-3688	
312	1D0309-1825	1C2640	1D0408-1825	4C1920	436	1D0315-4288	1C4205	1D0426-4288	
316	1D0309-2225	2C5608	1D0408-2225	4C1921	448	1D0315-5488	1C3321	1D0426-5488	
320	1D0309-2625	2C0987	1D0408-2625	4C2088	508	1D0329-1488	1C2213	1D0446-1488	
324	1D0309-3025	1C3673	1D0408-3025	4C0769	510	1D0329-1688	3C3592	1D0446-1688	
330	1D0309-3625	1C8749	1D0408-3625	3C9741	512	1D0329-1888	1C2485	1D0446-1888	
336	1D0309-4225	1C2807	1D0408-4225	4C0228	516	1D0329-2288	3C6363	1D0446-2288	
3508	1D0313-1425	3C6996	1D0415-1425	2C3714	520	1D0329-2688	1C4968	1D0446-2688	
3510	1D0313-1625	1C5391	1D0415-1625	2C3820					

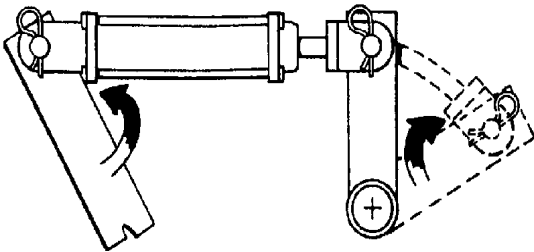


HYDRAULIC CYLINDER SAFETY

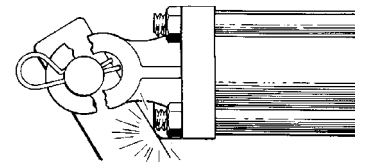
General Cautions:

- Always use a relief or bypass in your hydraulic system to prevent personal injury and/or breakage of equipment or components. Never operate a cylinder above rated pressures.
- Never use a cylinder as a transport device.
- Use correct fittings and proper hydraulic oil - Contact CROSS if you have questions.

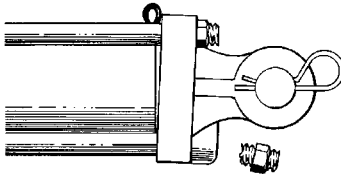
Binding



Check clevis clearances before, during and after extending the cylinder and before using the cylinder under pressure to avoid possible injury, or bent or broken rods or clevises caused by binding.

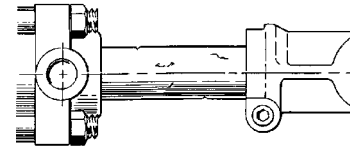


Too much pressure causes...



Extruded static seals and/or broken tie rods. Check pressure rating of cylinder against pump pressure of the tractor.

Rough or scored rod



Protect the rod at all times and make sure that nothing hits or rubs it when it is extended. Rough places on the rod damage the seals and reduce their normal life resulting in the necessity for frequent replacement.

Dirty Oil

Oil must be filtered to a minimum of 25 microns. Filters should be changed regularly - spin-on types after 50 hours of initial use and then after every two hundred fifty hours of use. Use of a condition indicator is recommended. Consult your tractor or implement owner's manual for filtration and changing recommendations for internal systems

Pinhole Leaks

If you observe a pinhole leak, discontinue use of the component. If oil has penetrated your skin or contacted your eye, seek medical attention immediately!



www.crossmfg.com

MANUFACTURING, INC.

LEWIS, KANSAS

PHONE 620/324-5525

FAX 620/324-5737

CROSS MANUFACTURING INC. RESERVES THE RIGHT TO DISCONTINUE PRODUCTS AND / OR CHANGE DESIGN, SPECIFICATIONS OR PRICES AT ANY TIME WITHOUT INCURRING ANY OBLIGATION.

CYL30077C 6/98